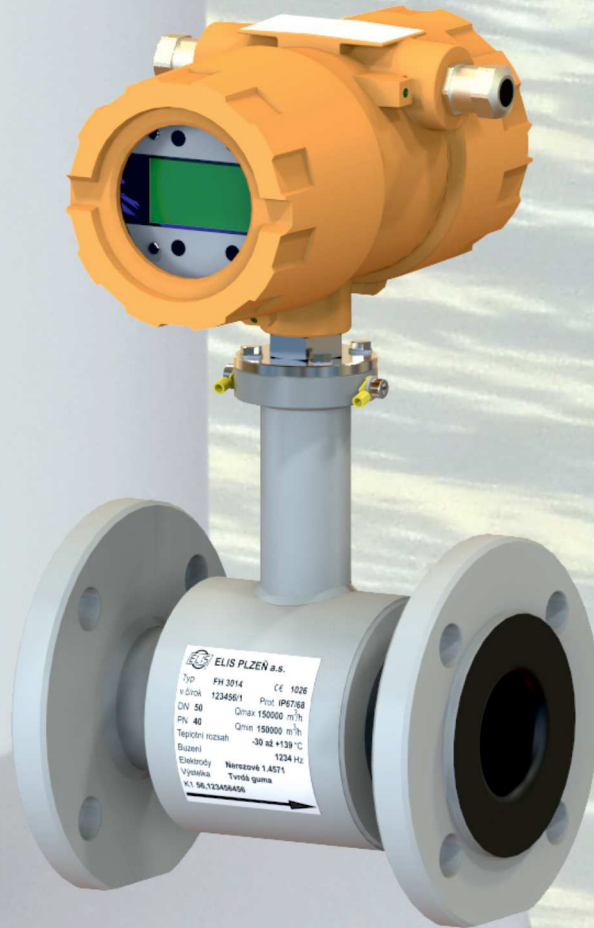




ELIS PLZEŇ a.s.



INDUCTION FLOW METERS FLONET FH30XX

FLONET FH30XX

Flow meter FLONET FH30XX is an induction flow meter for measuring of flow of conductive liquids in water, chemical, food and other industries and heating distribution systems too. It satisfies the most stringent requirements as to the measurement accuracy, long-term stability and sanitary standards. The flow measurement is carried out in both directions. The meter sensor doesn't have any mechanical moving parts and its installation into the piping system has no impact on fluid mechanics or pressure inside the piping.

The electronic unit supplies power and process signals coming from the sensor. Thanks to the OLED display the data are easy to read even in the extreme frost. The basic configuration doesn't require opening of flow meter, since the control is exercised using optical sensors. The meter has pulse, frequency and current outputs. For data communication there is an interface with MODBUS RTU and HART® protocols.

METER SPECIFICATION

nominal diameter / size	DN15 to DN1200 / 3/4" to 48"
nominal pressure [bar / psi]	6, 10, 16, 25, 40 / 150, 300, 600
min. conductivity of measured liquid	10 µS/cm
electrode material	stainless steel 1.4571, Hastelloy-C4, platinum, tantalum
ambient temperature	-40 to +70°C (-40°F to 160°F)
sensor lining	soft or hard rubber, Teflon
version	remote or compact version
connection	flanged (depending on customer requirements), wafer
max. temperature of measured liquid	up to 150°C (302°F)
measurement accuracy	±0.3%
measurement repeatability	± 0.15%
measurement range	0.1 to 10 m/s (0.33 to 33 ft/s)
outputs	current (0) 4 to 20 mA, insulated, 2pc pulse / binary / frequency 0 to 10 kHz, insulated
communication protocol	MODBUS RTU, HART®
power supply	90-230V AC, 50 to 60Hz, 24V DC
protection class	IP 67 (IP 68 on request)

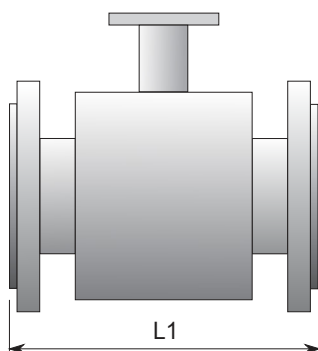
DESIGN VERSION, CONFIGURATION AND TYPE DESIGNATION

design version	COMPACT	REMOTE
configuration	COMFORT	COMFORT
type designation - flanged	FH3014	FH3015
- wafer	FH3024	FH3025

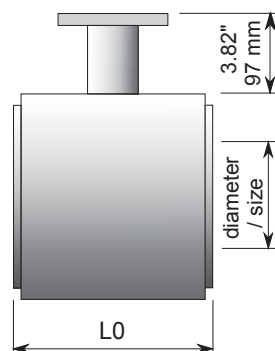
RATED INTERNAL DIAMETER AND SENSOR LENGTH

pressure	40 bar / 150lb							16 bar / 150lb					10 bar / 150lb				6 bar / 150lb															
diameter [mm]	20	25-40	50-80	100	125	150	200	250	300	350	400-600	700	800	900	1000	1200	20	25-40	50-80	100	125	150	200	250	300	350	400-600	700	800	900	1000	1200
size [inch]	3/4"	1"-1 1/2"	2"-3"	4"	5"	6"	8"	10"	12"	14"	16"-24"	28"	32"	36"	40"	48"	3/4"	1"-1 1/2"	2"-3"	4"	5"	6"	8"	10"	12"	14"	16"-24"	28"	32"	36"	40"	48"
L1 [mm]	200	200	200	250	250	300	350	450	500	550	600	700	800	900	1000	1200	200	200	200	250	250	300	350	450	500	550	600	700	800	900	1000	1200
L1 [inch]	7.9	7.9	7.9	9.8	9.8	11.8	13.8	17.7	19.7	21.7	23.6	27.6	31.5	35.4	39.4	47.2	7.9	7.9	7.9	9.8	9.8	11.8	13.8	17.7	19.7	21.7	23.6	27.6	31.5	35.4	39.4	47.2
L0 [mm]	74	104	104	104	134	134	219	-	-	-	-	-	-	-	-	-	74	104	104	104	134	134	219	-	-	-	-	-	-	-	-	-
L0 [inch]	2.9	4.1	4.1	4.1	5.3	5.3	8.6	-	-	-	-	-	-	-	-	-	2.9	4.1	4.1	4.1	5.3	5.3	8.6	-	-	-	-	-	-	-	-	-

FLANGED VERSION



WAFFER VERSION



ELECTRONIC UNIT

